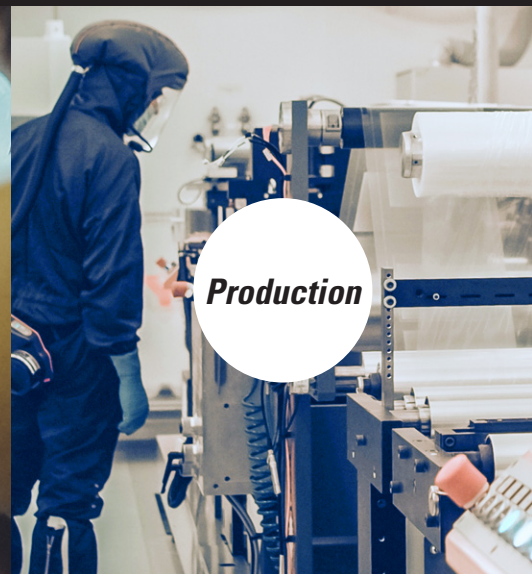
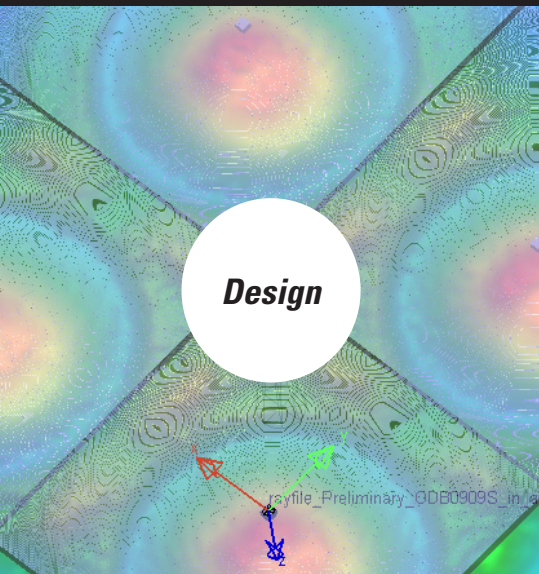


# FLEXIBLE LIGHT GUIDING

Our key product, known as front light guide, is applied to reflective displays, like EPD and LCD. It is unique in terms of optical performance enabling superior contrast and wider color gamut. Other customized lightguides and light management films for different purposes are also available from Nanocomp.

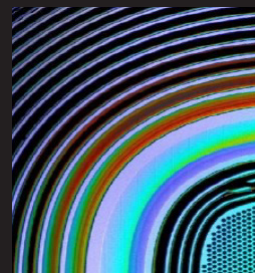
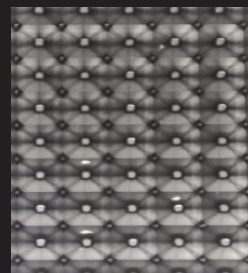


## PRODUCTS/SOLUTIONS:



### Light guides for displays

- Front light guides for e-paper displays (B&W, colour)
- Front light guides for R-LCD
- Directional light guide for special back light functions



### Light managements films

- Microlens arrays (MLA)
- Mini LED diffusers
- Microstructured films (Fresnel lens, Microfluidics, Waveguide, Multilayer RI tuned films (buried))







# NANOCOMP

**LIGHTGUIDES AND LIGHT  
MANAGEMENT FILMS FOR  
EXCELLENT PERFORMANCE**